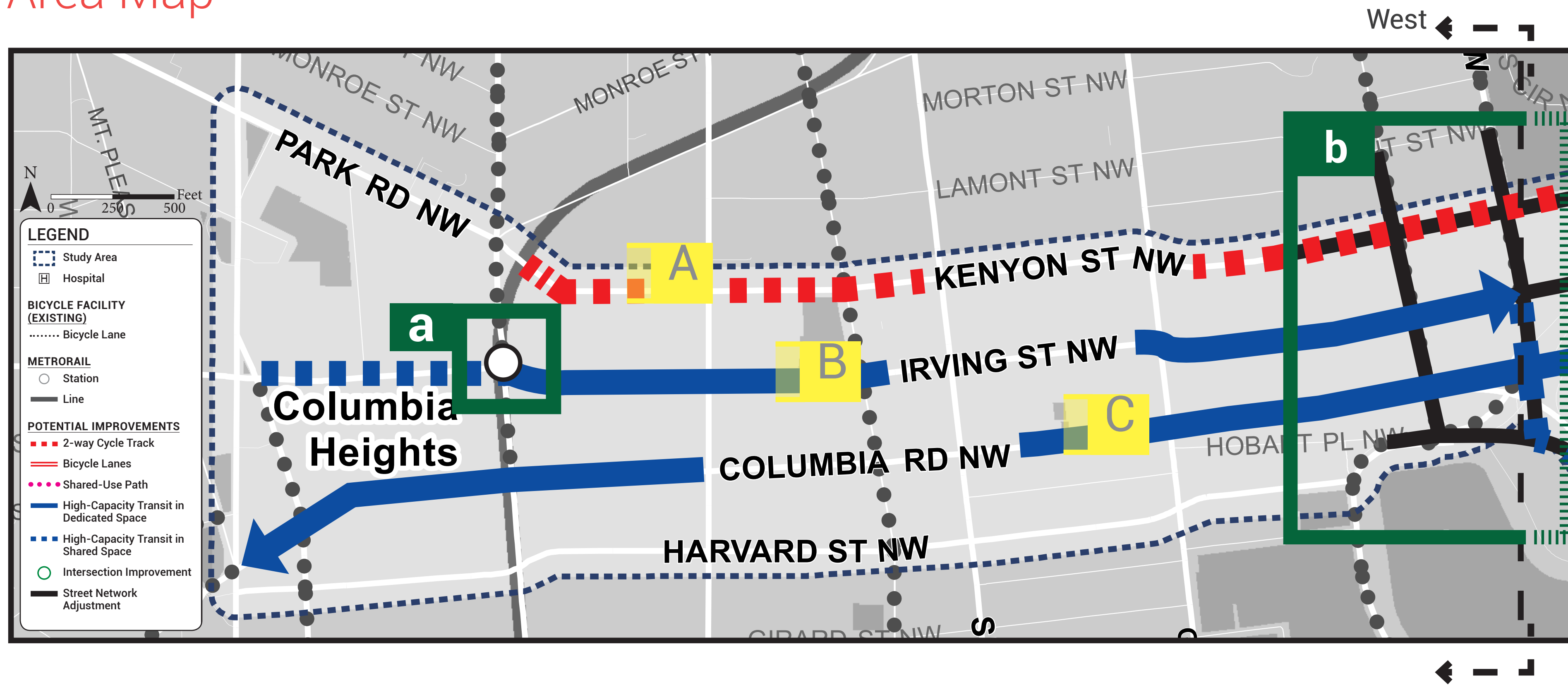


Geographic Concepts - Concept 3 West

NOTE: Bus service changes will be subject to further evaluation by DDOT and WMATA. Any proposed access points to the Washington Hospital Center are for illustrative purposes only and are subject to further review. Impacts to parking are subject to further review including identification of mitigation and street by street review and analysis.

Area Map



Information

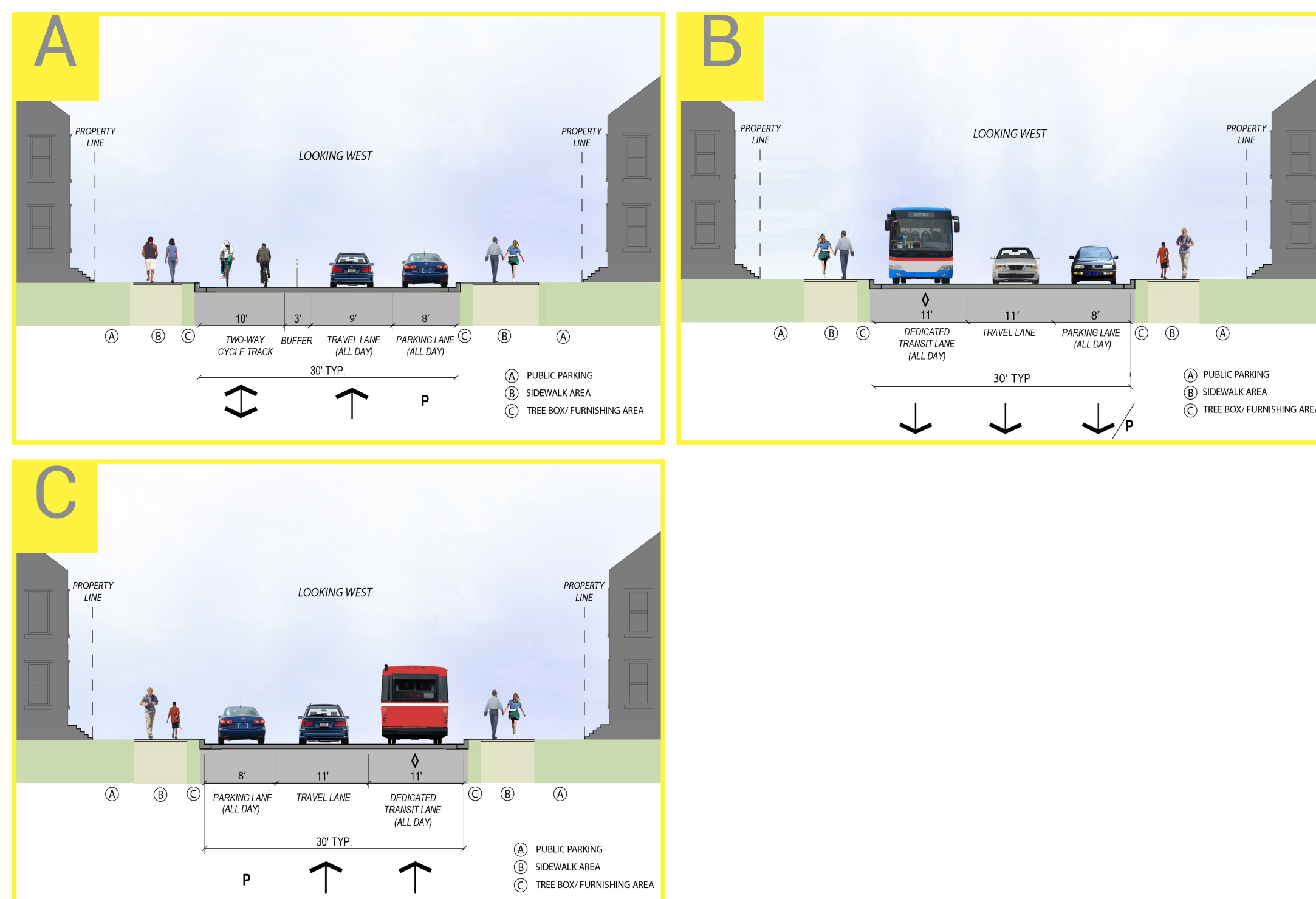
Modal design areas addressed in this concept were identified by:

- The first public workshop
- The online interactive map
- Analysis of the existing conditions

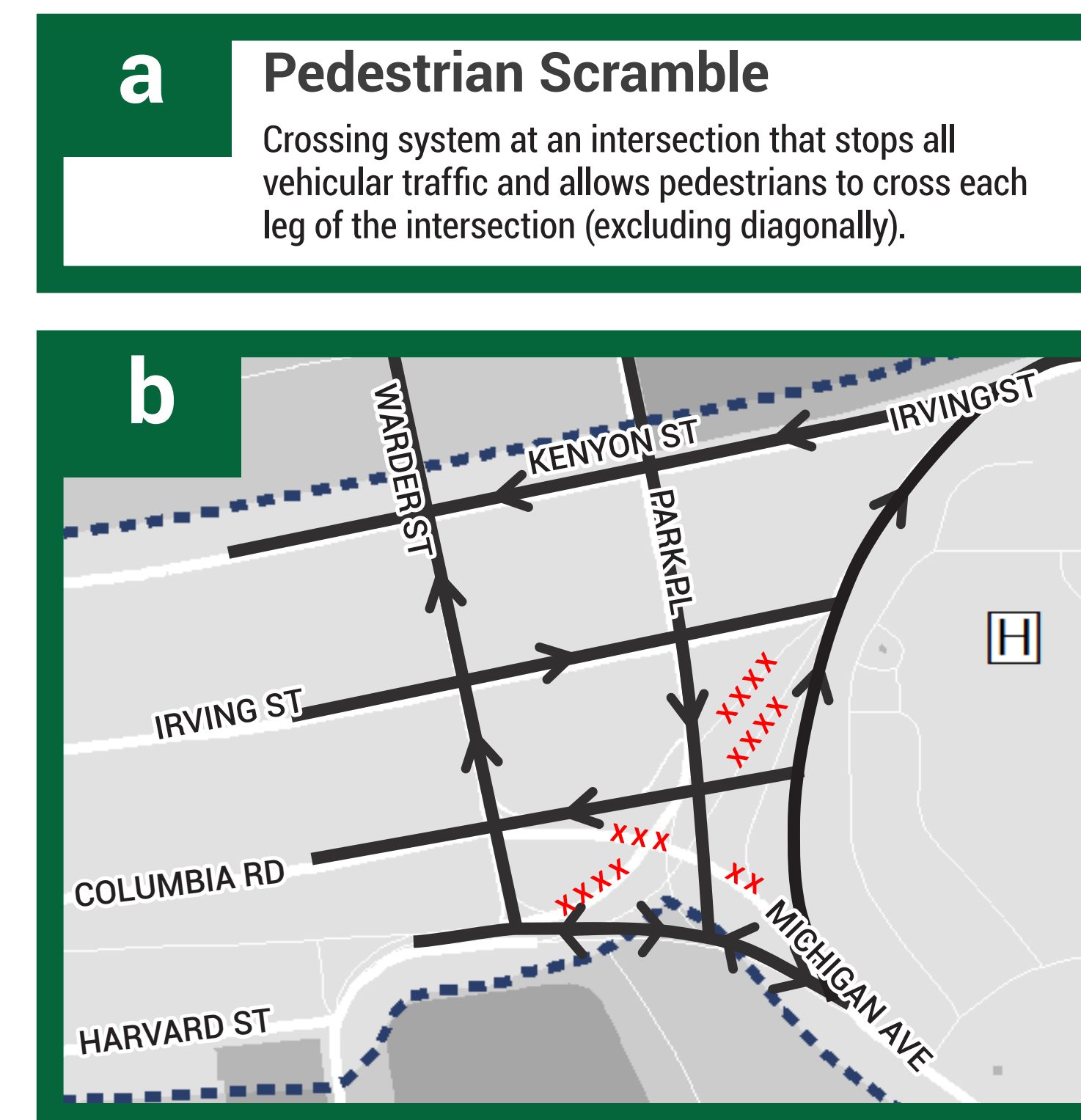
KEY FEATURES:

MODAL DESIGN	DETAILS
Bicycle	• A continuous bicycle facility connecting Columbia Heights and Brookland via a two-way cycletrack on Kenyon Street NW
Transit	• Dedicated bus lane along most of Irving Street NW and Columbia Road NW
Multimodal	• Reconnected street grid west of the Washington Hospital Center maintaining the connecting link between Michigan Avenue NW and Irving Street NW

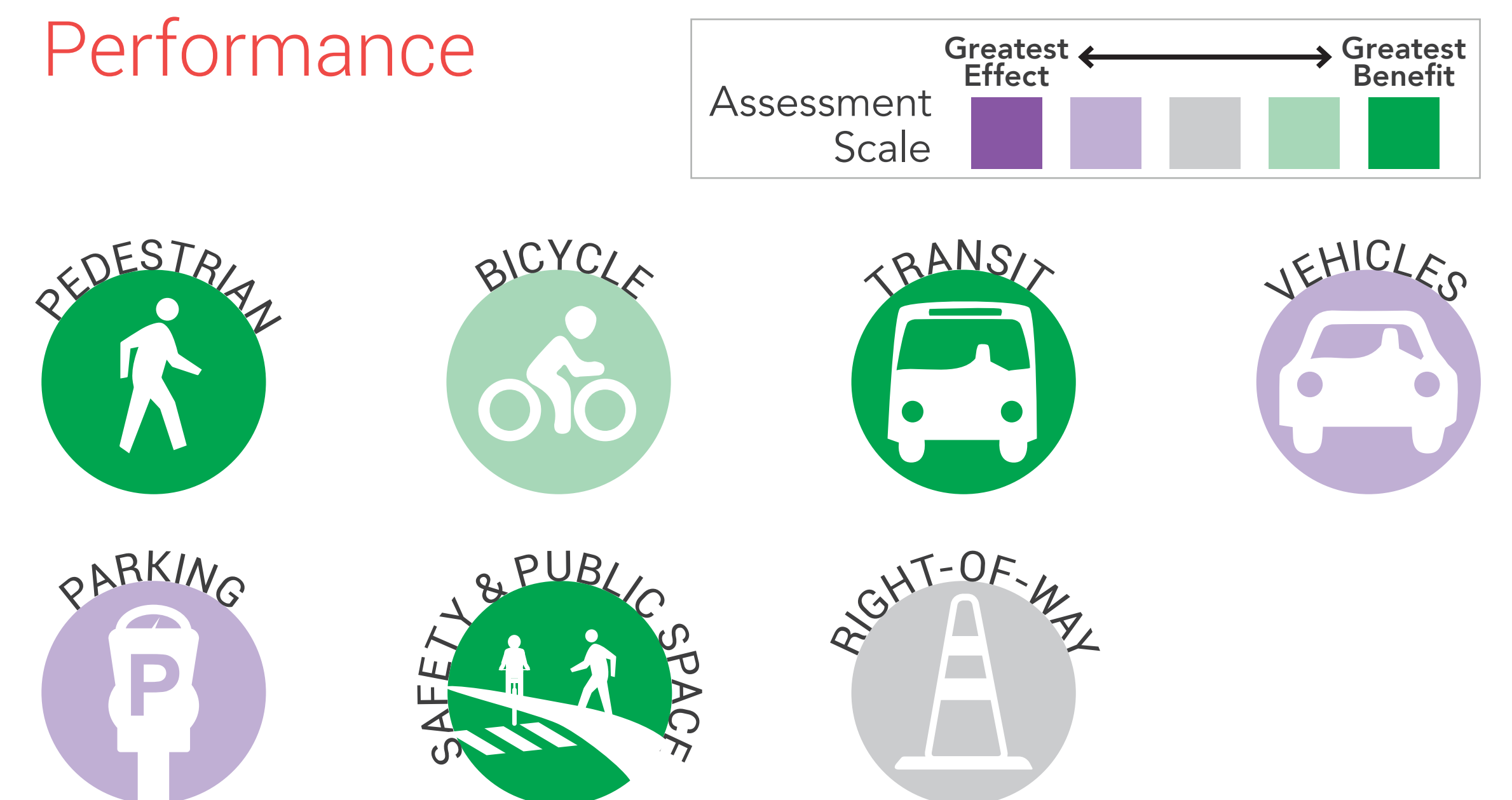
Cross Sections



Concept Details



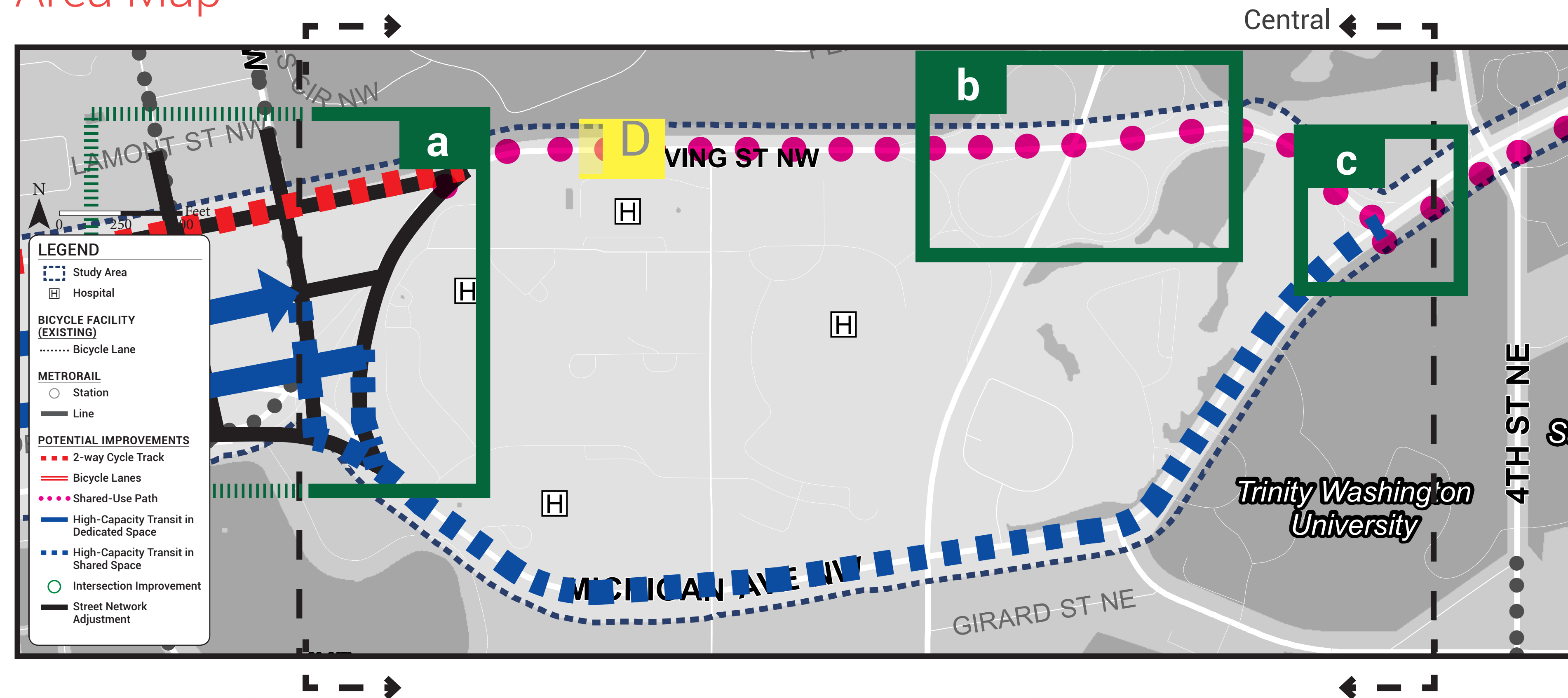
Performance



Geographic Concepts - Concept 3 Central

NOTE: Bus service changes will be subject to further evaluation by DDOT and WMATA. Any proposed access points to the Washington Hospital Center are for illustrative purposes only and are subject to further review. Impacts to parking are subject to further review including identification of mitigation and street by street review and analysis.

Area Map



Information

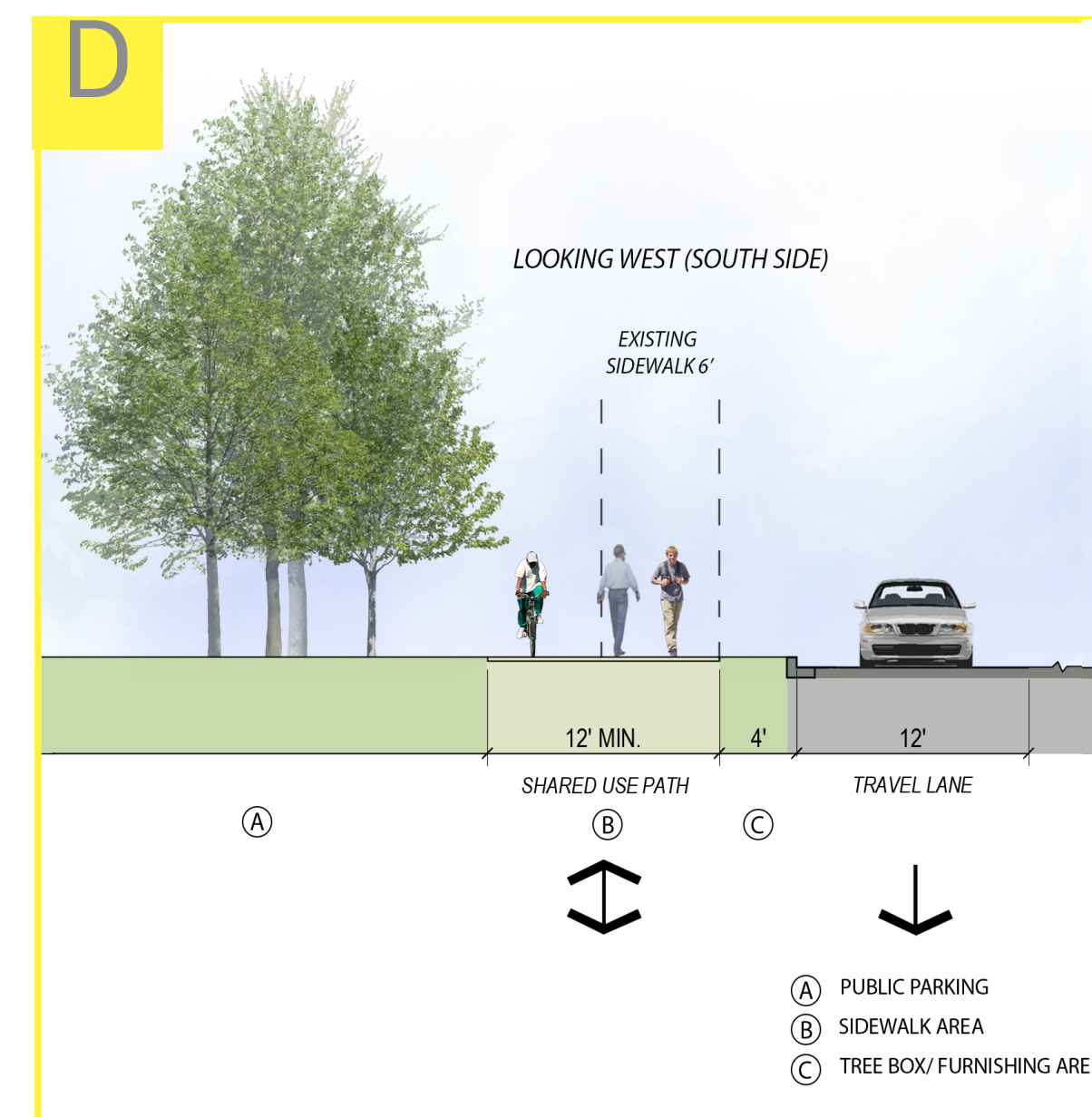
Modal design areas addressed in this concept were identified by:

- The first public workshop
- The online interactive map
- Analysis of the existing conditions

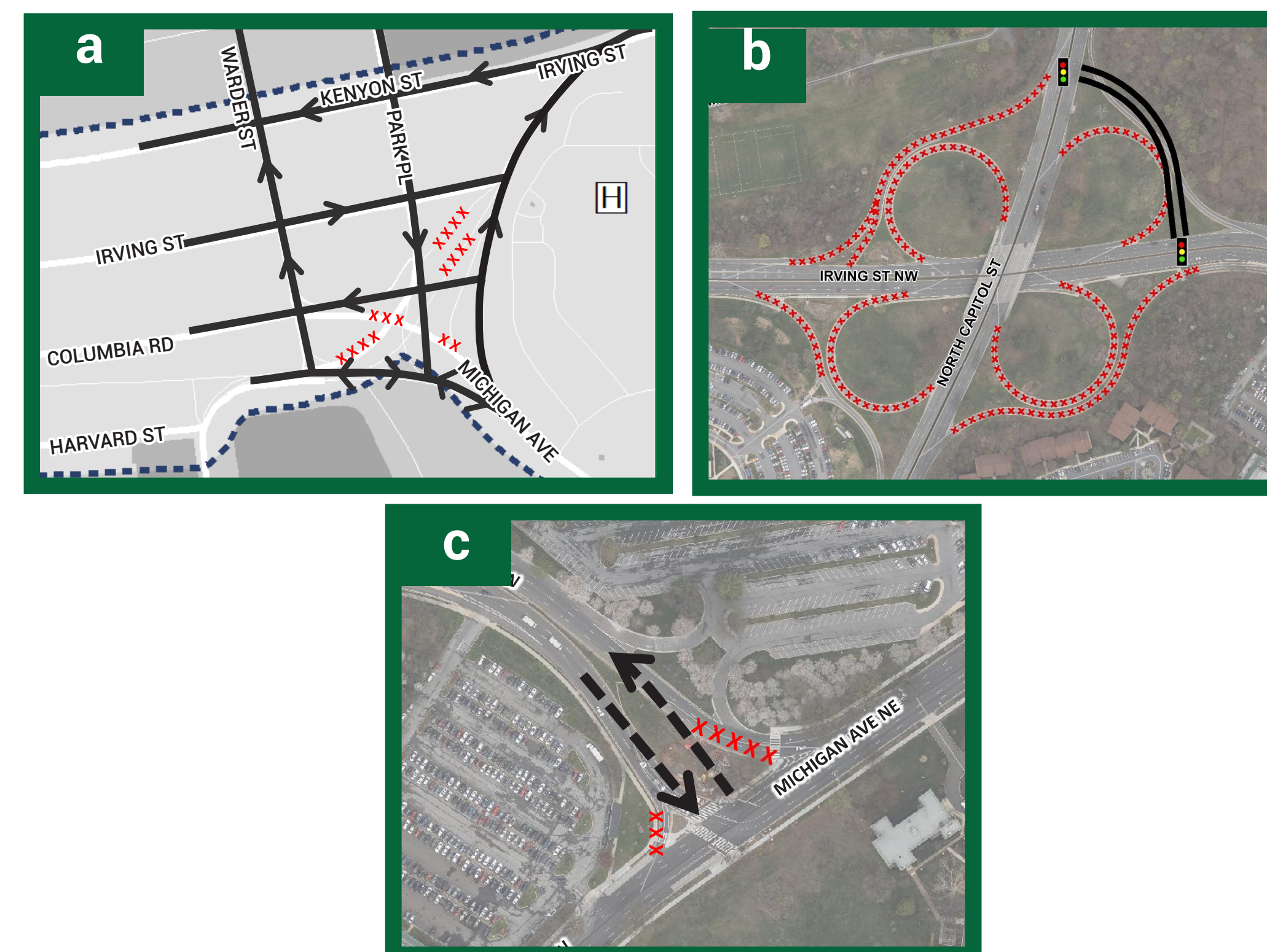
KEY FEATURES:

MODAL DESIGN	DETAILS
Bicycle	• Off-street, two-way shared use path on the south or north side of Irving Street
Transit	• Transit in shared lanes along Michigan Ave NW/NE
Multimodal	<ul style="list-style-type: none"> • Reconnected street grid west of the Washington Hospital Center • A redesigned interchange at Irving Street NE and North Capitol Street • A reconfigured intersection at Michigan Avenue NE and Irving Street NE

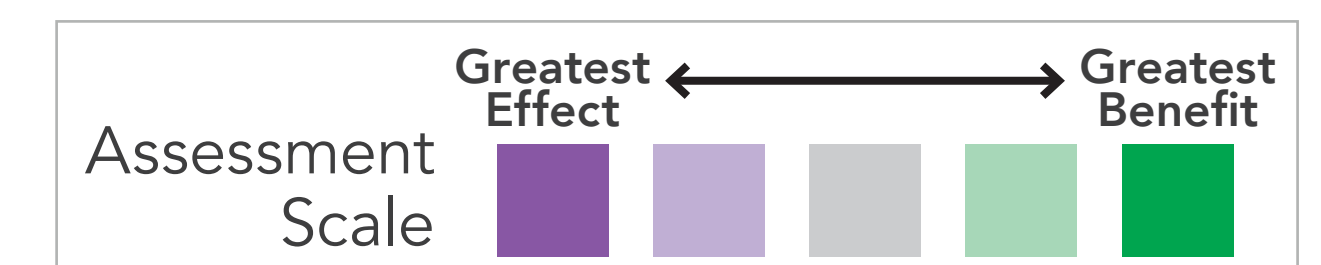
Cross Sections



Concept Details



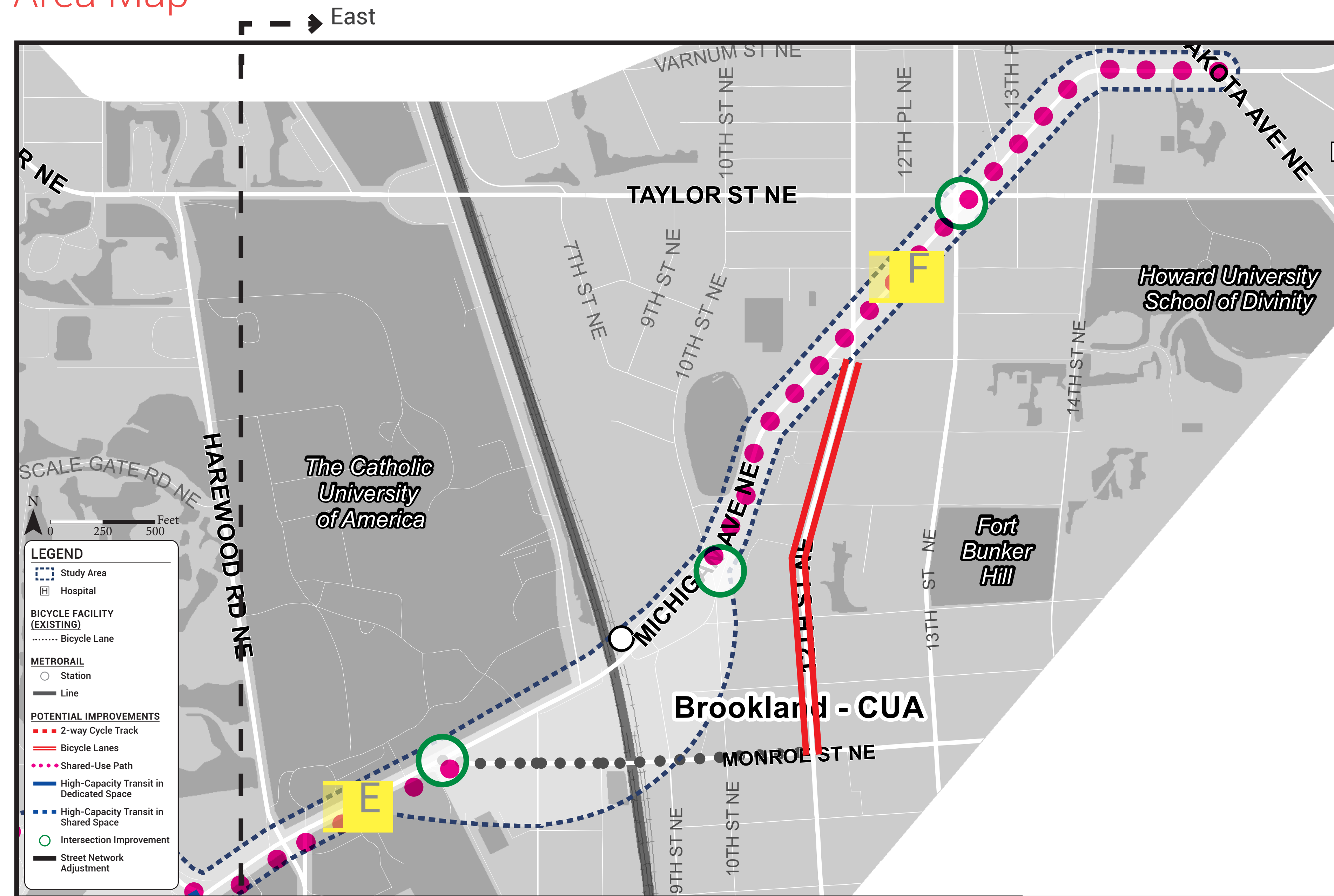
Performance



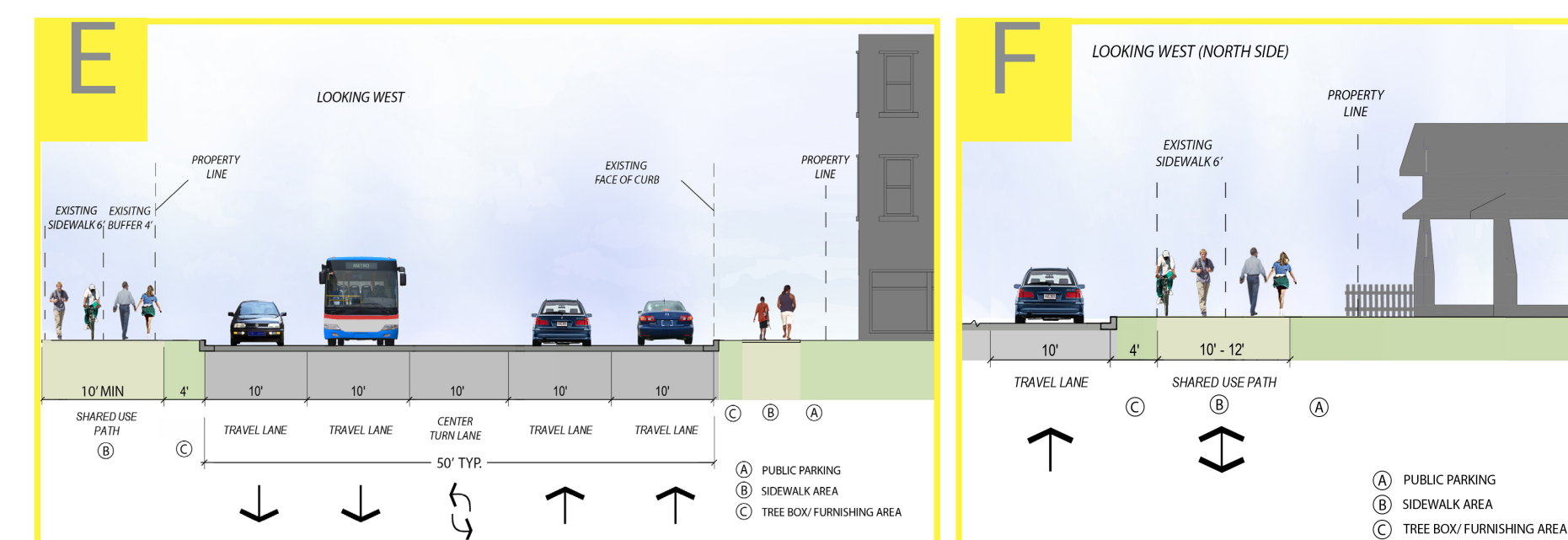
Geographic Concepts - Concept 3 East

NOTE: Bus service changes will be subject to further evaluation by DDOT and WMATA. Any proposed access points to the Washington Hospital Center are for illustrative purposes only and are subject to further review. Impacts to parking are subject to further review including identification of mitigation and street by street review and analysis.

Area Map



Cross Sections



Information

Modal design areas addressed in this concept were identified by:

- The first public workshop
- The online interactive map
- Analysis of the existing conditions

KEY FEATURES:

MODAL DESIGN	DETAILS
Bicycle	<ul style="list-style-type: none"> • Off-street, two-way shared used path along south side of Michigan Avenue NE between Irving and Monroe Streets, and on the north side between 10th Street and South Dakota Avenue • Bicycle Lanes on 12th Street NE from Monroe St NE to Michigan Avenue NE
Transit	<ul style="list-style-type: none"> • Transit maintains current operations but the intersection at Michigan Avenue and Monroe Street NE is redesigned to improve bus access by pushing back parking spaces and extending the existing Monroe Street curb
Multimodal	<ul style="list-style-type: none"> • Intersection design and/or signal improvements at Michigan Avenue and Monroe Street NE, 10th Street NE, and Taylor Street/13th Street NE to improve operations and safety

Performance

